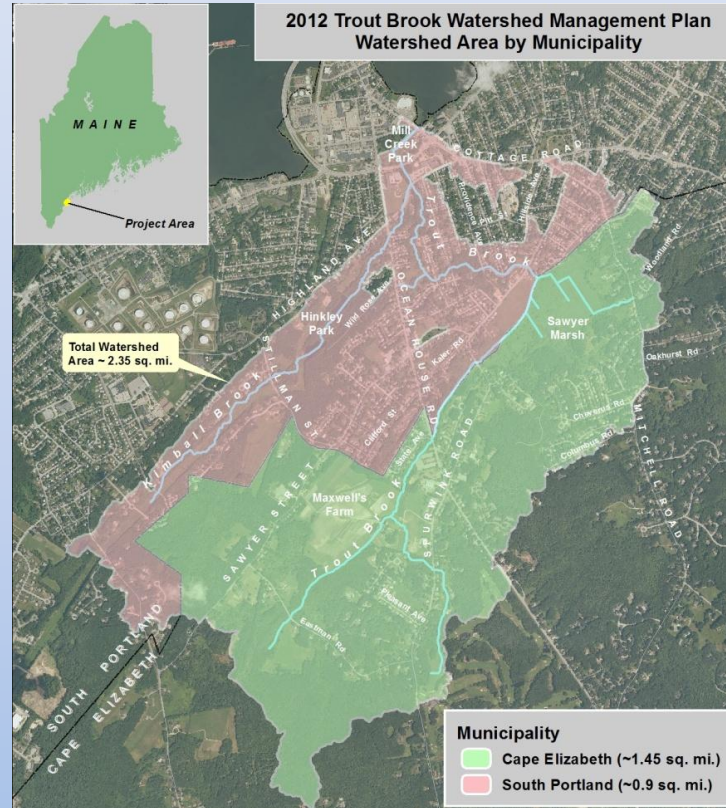


# Trout Brook 2012 Watershed Management Plan

## *Key Findings & Recommendations for Cape Elizabeth*



*Fred Dillon – South Portland Stormwater Program Coordinator*

*December 3, 2012*

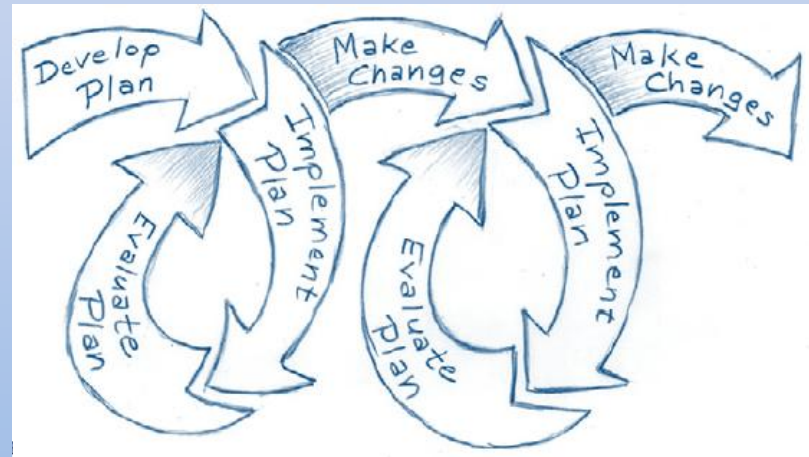


# Presentation Overview

- Watershed Management Plan (WMP)  
Definition
- Why the Plan is needed
- Key findings
- Key recommendations
- Q&A / Discussion

# Watershed Management Plan Definition

- WMP serves as “road map” for restoring impaired water quality and aquatic habitat
- Identifies impairment sources and recommends restoration practices
- Adaptive management process that incorporates new info
- Required by DEP / EPA for grant funding to implement recommendations



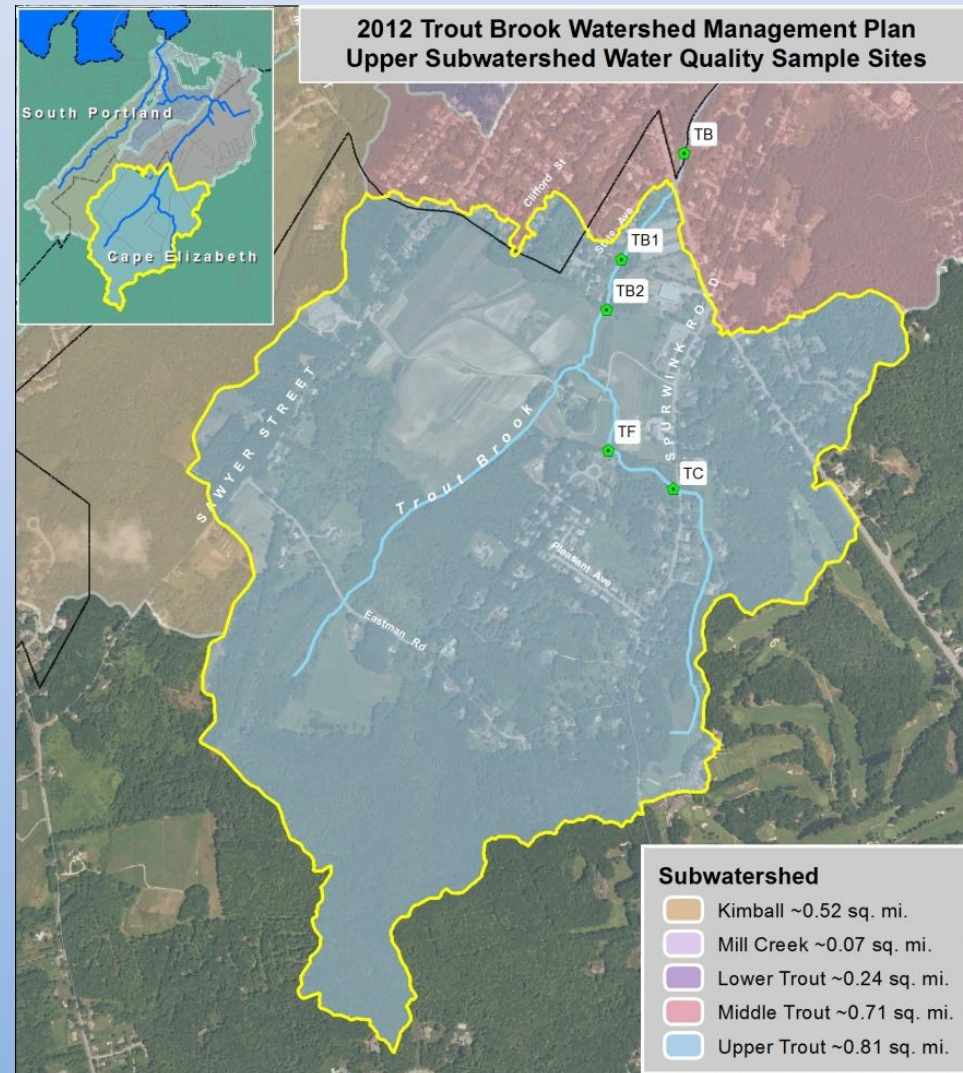
# Why the Plan is Needed

- Trout Brook designated by DEP as “urban impaired stream” for failure to meet WQ & aquatic habitat standards
- Requires development of restoration plan to attain these standards
- Consistent with Stormwater Permit requirements
- Protect & restore tremendous community asset



# Key Findings – Impairment Types

- **Upper w'shed**
  - *Nutrients* → *low DO*
- **Middle w'shed**
  - *Nutrients & chloride* → *bugs*
- **Lower w'shed**
  - *Nutrients & chloride* → *bugs*
- **Kimball Brook**
  - *Iron enrichment* → *bugs*



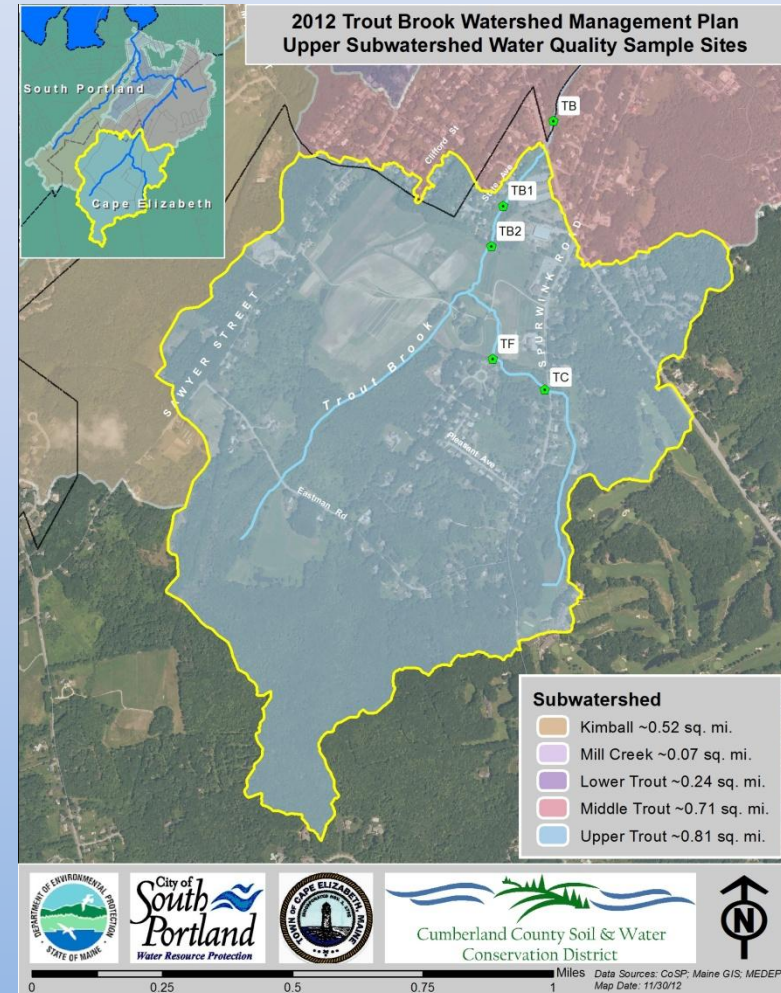
# Recommendations – Upper W'shed

## Agricultural Outreach

- *Nutrient management planning*
- *Fertilizer BMPs*
- *Farm conservation planning*

## Residential & Commercial Outreach

- *Reduce nutrient runoff*
- *Increase use of stream buffers*



# Next Steps

- Continue SW program activities (sweeping, winter maintenance / salt management)
- DEP Grant for 2013-14
  - *YardScaping presentations*
  - *Rain garden installation workshop*
  - *YCC program*
  - *Green Neighbor pledge drive*
- CE Council endorsement of Plan?

# Questions / Discussion